



Lao people's Democratic Republic  
Peace Independence Democracy Unity prosperity



# Country Experience introduction about ICP action in Lao PDR

Workshop on ICP on Sep 19-20, 2019 in  
Nanning, Guangxi

Mr. Saykham SISOMBATH  
Ministry of Planning and Investment, Lao Statistic Bureau



ສູນສະຖິຕິແຫ່ງຊາດ  
Lao Statistics Bureau



# Presentation Outline

---

- I. Introduction
- II. Activities for the 2017 ICP
- III. Methods and Techniques for ICP data collection  
In Lao PDR
- IV. Result
- V. Issues and Challenges
- VI. Way Forward.

# I. Introduction

---

- Lao PDR is landlocked country and located in the middle of the South East Asia region;
- 3 region: North, Center and South;
- 18 provinces;



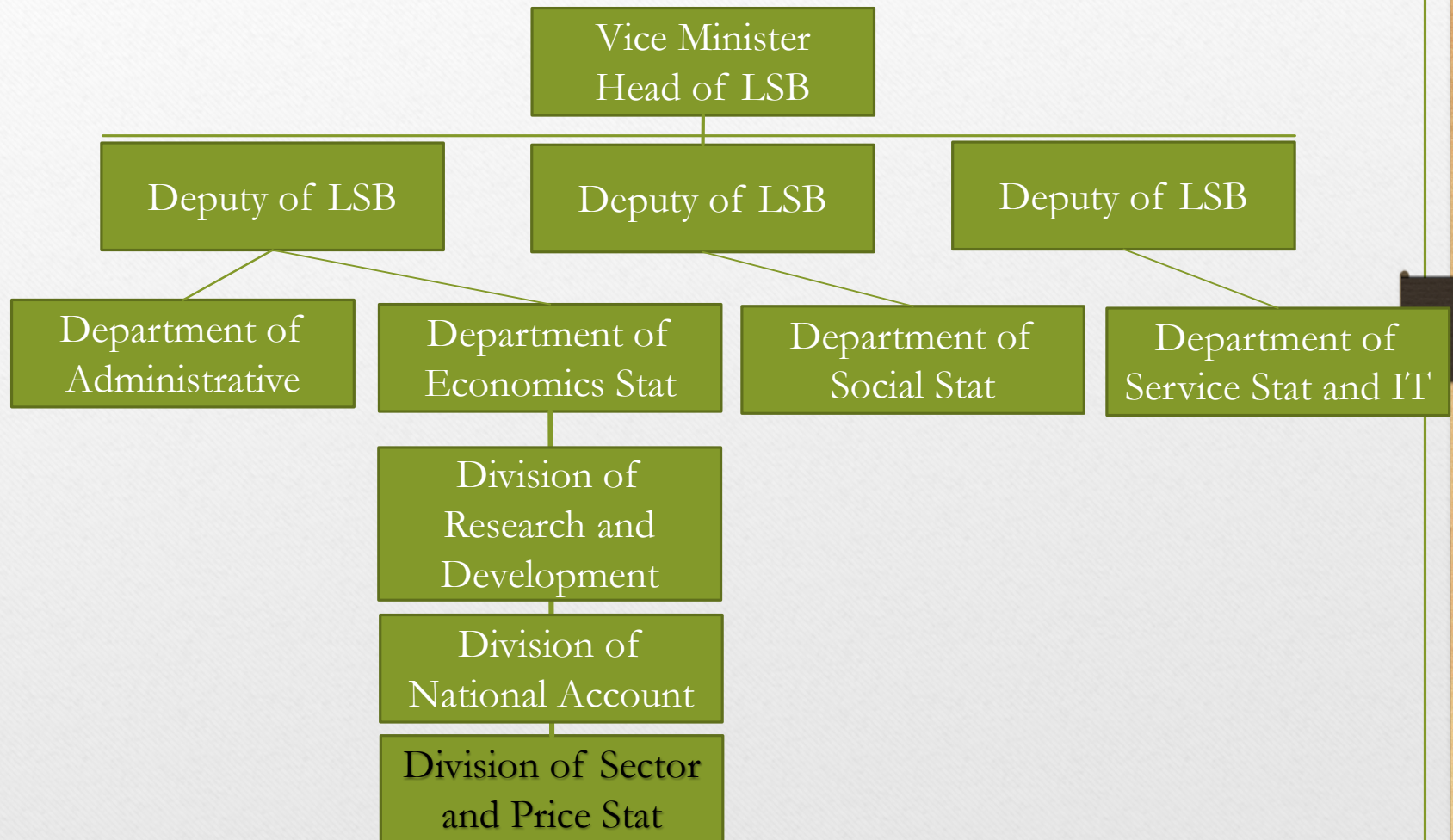
# Introduction

---

## ❖ What LSB responsibilities.

- Collecting and Collating Data;
- Processing and analysis social-economic data;
- Supply and use Statistics data;
- Design and do Survey and Census;

# Structure of Lao Statistics Bureau



## II. Activities for the 2017 ICP

No.	Main Activities	Sub Activities	Regional item total
I.	Household	1) Household Price;	934
II.	Non-Household	2) Machinery and Equipment Price “M&E”;	196
		3) Construction Price “CNS”;	58
		4) Housing and Rental;	21
		5) Government Compensation of Employee “CE”;	33
		6) GDP by Expenditure	155 BH

# III. Methods and Techniques for ICP data collection in Lao PDR

---

## ❖ LSB ICP team:

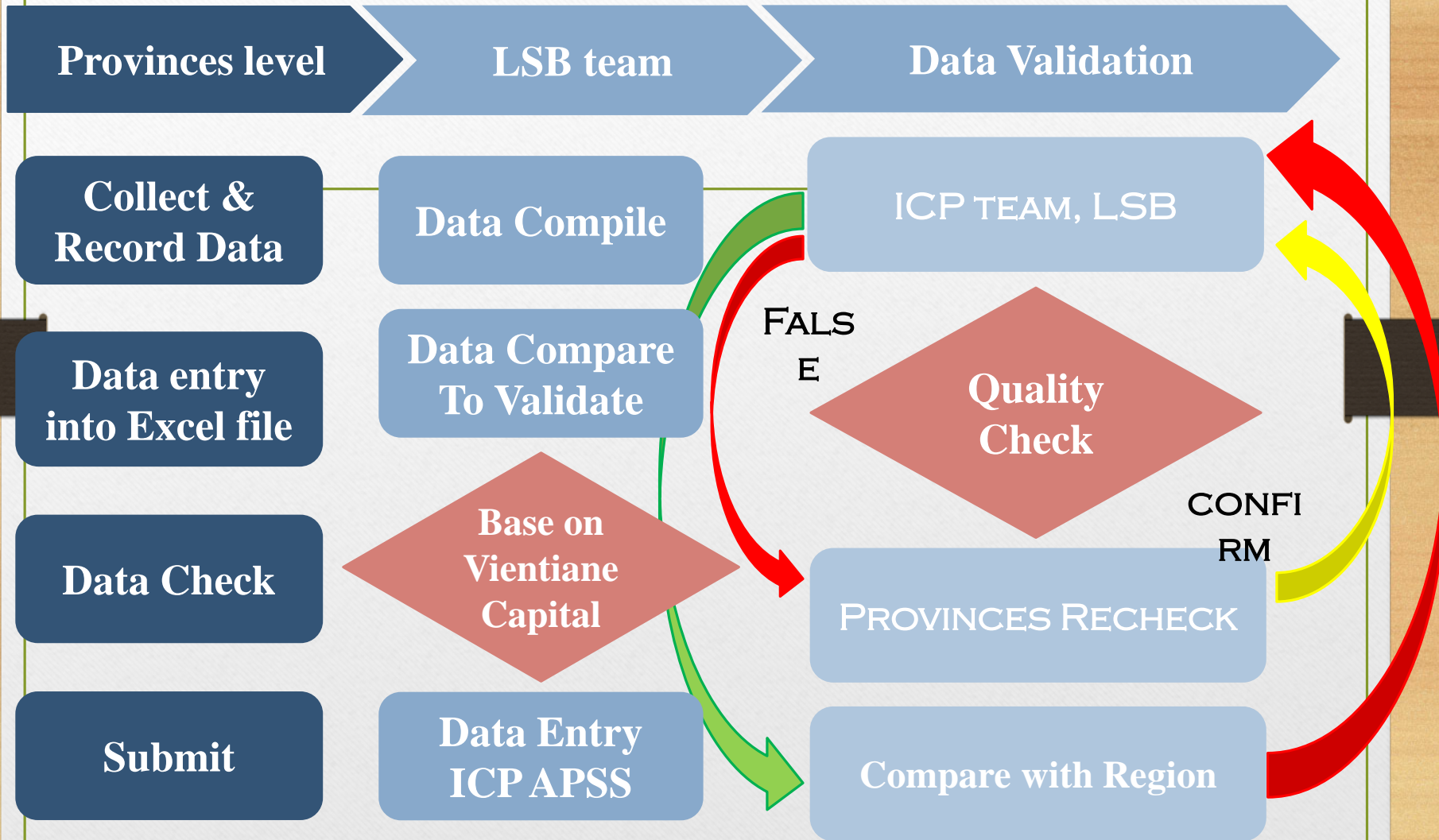
- To specify purpose and design data collection field;
- To survey production item (available);
- To translate the Items and description of available items;
- Case study of Data Source;
- Training to Provincial Statisticians.

# Methods and Techniques

---

- ❖ LSB and Local Provinces join together
  - For Primary Data:
    - ✓ Outlet Survey;
    - ✓ Price Data collection.

# Methods and Techniques



# Summary Statistics - Household

Note: This table can be derived from the “Summary Statistics Report” of the ICP-APSS.

Important information for discussion are highlighted in yellow.

Table 1. Summary of Data	
[Period = 04/01/2017 - 06/30/2018]	
Particulars	Value
<b>Products with Quotations:</b>	
1	
2	
3 - 5	
6 - 10	
11 - 14	
15 - 30	
31 - 90	
> 90	
<b>Subtotals</b>	
=> 15	
< 3	
< 15	
<b>Total No. of Product Priced</b>	
<b>Total No. of Quotations</b>	
<b>Products MinMax Ratio &lt; 0.33</b>	
<b>Products with CV (in %)</b>	
equals 0	
0 < CV <=5	
5 < CV <=10	
10 < CV <=20	
20 < CV <=30	
CV > 30	
30 < CV <=40	
40 < CV <=50	
50 < CV <=60	
60 < CV <=70	
> 70	

## IV. Result

No.	Main Activities	Sub Activities	Lao PDR Collect total	Frequency of Data Collect
I.	Household	1) Household Price: `934`	635	Monthly: April 2017 to March 2018 in 17 Provinces, 22 Markets
II.	Non-Household	2) Machinery and Equipment Price “M&E”: `196`;	49	Quarterly: Q2, 2017 only in Vientiane Capital
		3) Construction Price “CNS”: `58`;	42	Quarterly: Q2, 2017 only in Vientiane Capital
		4) Housing and Rental: `21`;	16	Quarterly: Q2, 2017 only in Vientiane Capital
		5) Government Compensation of Employee “CE”: `33`;	18	Annual: 2018
		6) GDP by Expenditure: `155BH`	155 BH	Annual: 2018

## V. Issues and Challenges

---

- Quality of Products are different in each region;
- Items and Outlets are difficult to find;
- Collectors are changed to fieldwork after training;
- Collectors have less Experience and knowledge on Data collection method.

## VI. Way Forward.

---

- To review the performance of ICP project in Lao PDR in the past;
- To learn some experiences from this project that we could gain to improve on CPI & ICP data collection method to the next;
- To continue to participate ICP project in year 2020;
- To capacity building to LSB and local statistician provinces.

# Kobchai/Thank you

## **Presenter**

---

Ministry of Planning and Investment, Lao Statistic Bureau  
Department of Statistics Economic, Division of Sector and Price  
Statistics

Person Contact: +85620 5709 2255

Email: [saysombath9@yahoo.com](mailto:saysombath9@yahoo.com)

Office Tel No: +85621 214740

Email: [lstats@lsb.gov.la](mailto:lstats@lsb.gov.la)

*For more details, visit our website at:  
([www.lsb.gov.la](http://www.lsb.gov.la))*