

International Workshop On Compilation of Food Balance Sheets

16-17 April 2018, Xi'an, China

Status and Compilation of Agricultural Statistics in LAO PDR



National Accounts Division, Department of Economics Statistics,
Lao Statistics Bureau, MPI, Lao PDR

Outline

1. References
2. National Statistical System
3. The role of DES
4. Data collection and Classification
5. Estimation of Agriculture Production
6. Issues and Challenges
7. The way forward

Country Background

- Land lock country, locates between China, Thailand, Vietnam, Myanmar and Cambodia.
- Rich of natural resources: Water, Land (Mine), forest and etc
- Politic and culture
- Lao population about 6,916,401 person (2017)
- GDP per capita US\$ 2,468 (2017)

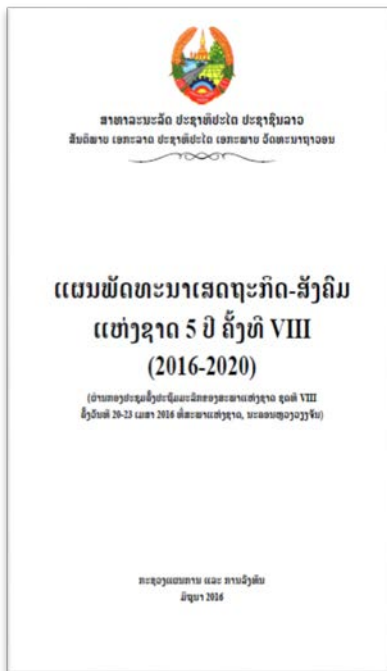


References

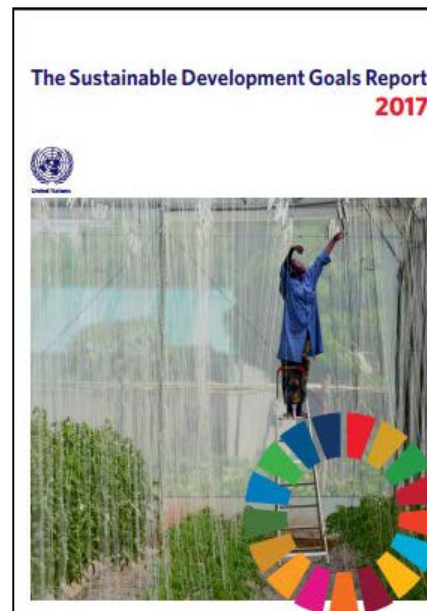
- National Socio-Economic Development Plan (NSED 2016-2020), SDGs, LDCs..
- Strategy for the Sustainable Development of the National Statistical System 2016-2025 and vision 2030 (SSDNSS)
- Statistics Law (Revision) on 11/5/2017
- ASEAN, IMF, UNSD...

References

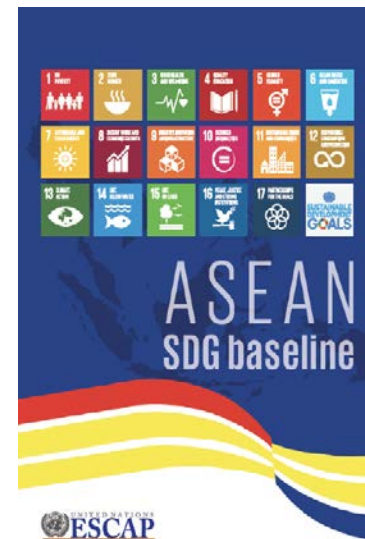
NSEDP



SDG



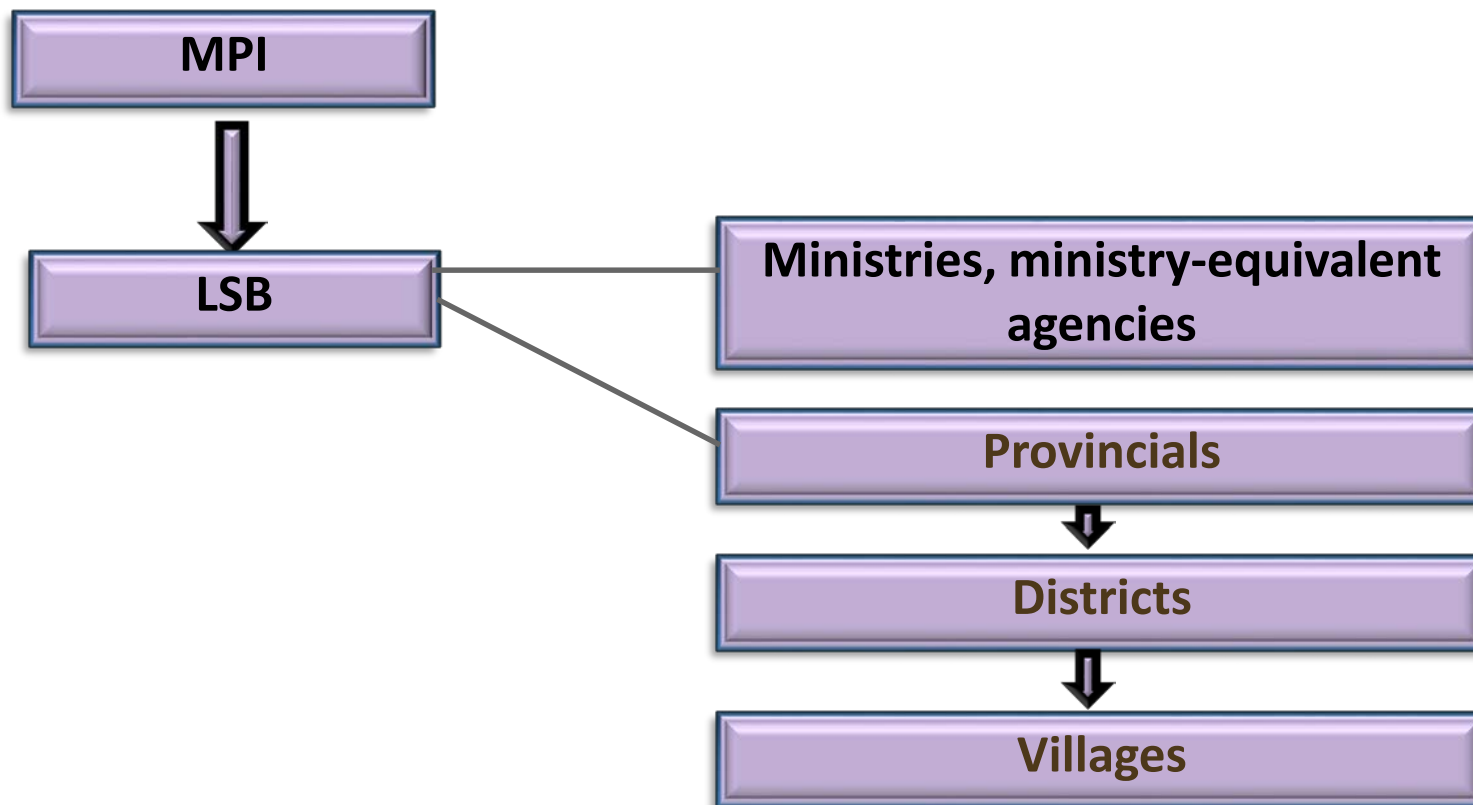
ASEAN



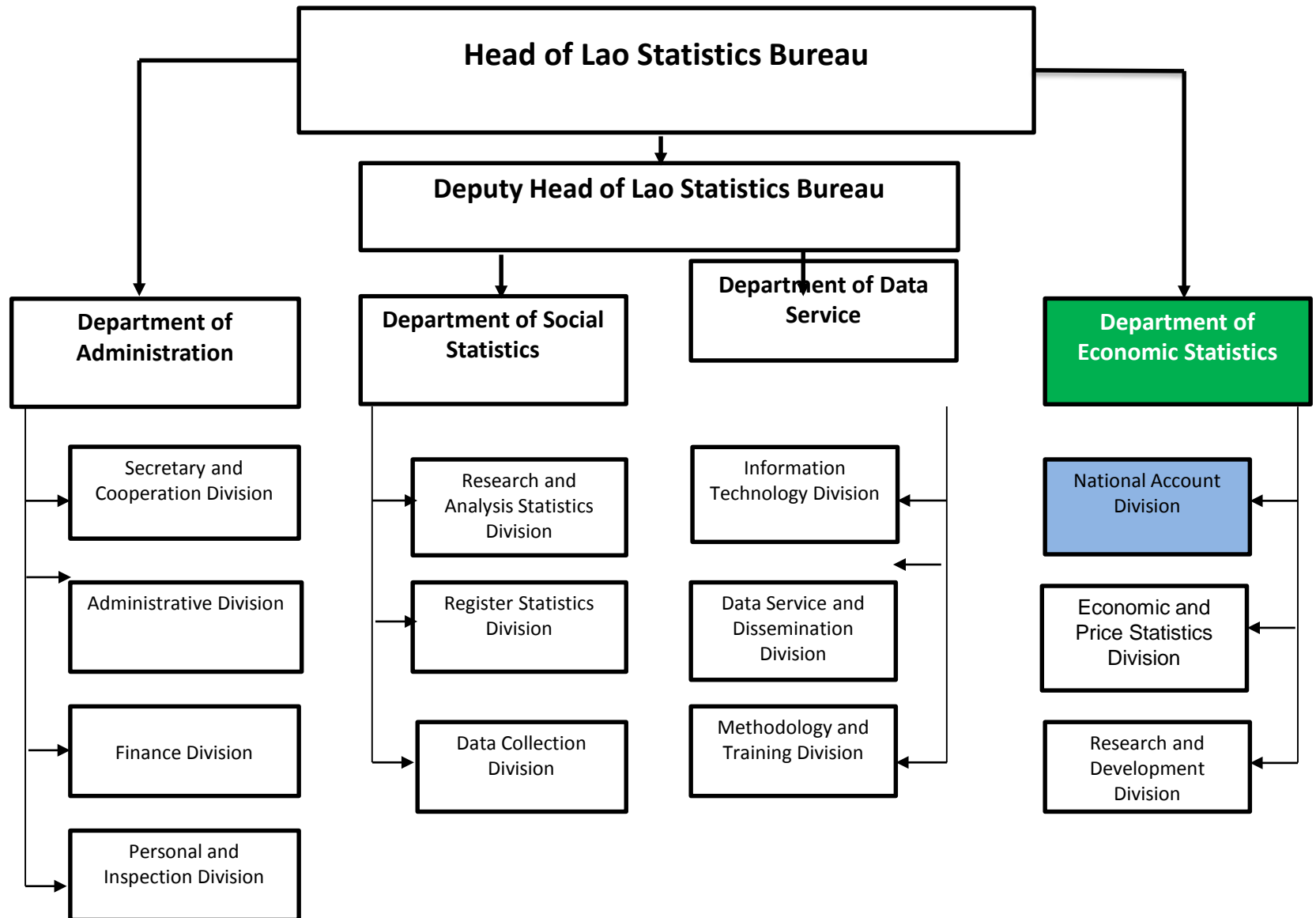
Others,..

UNSD,
UNESCAP,
and other
development
program

National Statistical System



Organization Structure



The Role of Department of Economics Statistics

- Develop work plan and activities to implement economic statistics compilation following the Statistics Law and SSDNSS;
- Compile and collect data and information related to economic statistics;
- Follow, monitor and compile data from statistical system (vertical and horizon)
- Identify the economics indicators
- Produce and disseminate official Statistics
- Ensure methodology and enhance capacity of provincial and line ministries on compiling economic statistics;

Data collection and Classification

- Two main data sources

- Survey data

- Agriculture Censes conducted in 1990, 2010/11
 - The LECS conducted in 1997/98, 2007/08, 2012/13
 - AHS conducted in 2004, 2005, 2006, 2007, 2009, 2011, 2014, 2015, 2016
 - Economics Censes EC 2006, 2012
 - Enterprise Survey conducted in 2003, 2004, 2005, 2006, 2007, 2015, 2016

- Administrative reporting data

- Ministry of Agriculture and Forestry
 - Tread- Department of Custom, Ministry of Finance
 - etc..

Data collection and Classification (Cont)

○ Classification

- ISIC Rev 4 and developed to LSIC as 5 digit
- LCPA (Lao Classification of Production on Activities)
- CPC 2.0
- COICOP
- HS 2012 (Import and export)

Main item of Agricultural Statistics

- Agricultural Cropping
- Livestock and Livestock Products
- Forestry and Logging
- Fishing
- Price Data

Main item of Agricultural Statistics

A1	AGRICULTURAL CROPPING
A1-1	Paddy
A1-11	Paddy irrigated
A1-12	Paddy other
A1-2	Cereals except rice
A1-21	Maize
A1-29	Other cereals
A1-3	Vegetables & oil seeds
A1-31	Cabbage & Chinese cabbage
A1-32	Onions & garlic
A1-33	Beans & other legumes
A1-34	Chilli
A1-35	Cassava
A1-36	Other roots & tubers
A1-37	Oil seeds
A1-38	Bamboo shoots
A1-39	Other vegetables & herbs

A1-4	Fruit
A1-41	Bananas
A1-42	Papayas
A1-43	Oranges & limes
A1-44	Pineapples
A1-45	Longan
A1-46	Melon & water melon
A1-47	Tamarind
A1-48	Coconuts
A1-49	Other fruit
A1-5	Industrial crops
A1-51	Coffee
A1-52	Tea
A1-53	Sugar cane
A1-54	Tobacco
A1-55	Cotton
A1-56	Rubber
A1-59	Other industrial crops
A1-8	Agricultural services

Main item of Agricultural Statistics

A2	LIVESTOCK & LIVESTOCK PRODUCTS
A2-1	Livestock
A2-11	Cattle
A2-12	Buffaloes
A2-13	Pigs
A2-14	Goats
A2-15	Poultry
A2-19	Other livestock
A2-2	Livestock products
A2-21	Milk, raw
A2-22	Eggs
A2-23	Honey
A2-29	Other livestock & hunting products

A3	FORESTRY & LOGGING
A3-1	Plantations & logging
A3-10	Plantations & logs
A3-2	Other forestry products
A3-21	Firewood
A3-22	Charcoal
A3-29	Other forestry products
A4	FISHING

Estimation of Agriculture Production



```
graph TD; A[Data Collection] --> B[Data Analysis]; B --> C[Output/Indicator];
```

Data Collection

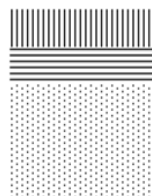
Data Analysis

Output/Indicator

The SUPPLY USE TABLE and its parts

PRODUCTS	DOMESTIC OUTPUT									Total output	Imports of gds & servs	Margins	Taxes on prodcts	Total supply			
	ACTIVITIES																
	A	B	C	D	E	F	G	H	etc								
TOTAL	PART A																
A1	PART D																
A2																	
A3																	
A4																	
A5																	
B0																	
C1																	
C2																	
C3																	
C4																	
C5																	
C6																	
C7																	
C8																	
etc																	

Total demand	INTERMEDIATE CONSUMPTION									Total IC	Final consumptn		Capital forma- tion	Exports of gds & servs
	ACTIVITIES										House- holds	Govern- ment		
	A	B	C	D	E	F	G	H	etc					
	PART A													
	PART C									PART B				



PART A: Production accounts

PART B: Commodity flow balances

PART C: Intermediate consumption matrix

PART D: Make matrix

PART E: Generation of income

GROSS VALUE ADDED	
TOTAL	PART A
Compens of employees	PART E
Other productn taxes	
Gross operating surplus	
Mixed income	

Issues and challenges

- Staff shortage, capability in the compilation and data analysis;
- Availability of agricultural statistics: Mostly production-related
- Accuracy, reliability and timeliness: Need to be improved
- Data analysis and dissemination Insufficient

Way Forward

- Enhance staff capacity building
- Agriculture Census III in 2019
- LECS VI 2017/2018
- Economic Census (EC III) in 2018
- Annual Establishment Survey 2017
- Other survey such as: SEZ, Trade in service and etc

THANK YOU

KOP JAI

Lao Statistics Bureau (LSB)
Ministry of Planning and Investment (MPI)

www.lsb.gov.la