



*International Workshop on Sustainable Development Goals (SDG) Indicators  
Beijing, China  
26-28 June 2018*

**CASE STUDIES AND COUNTRY EXAMPLES:  
USING HOUSEHOLD SURVEY DATA FOR SDG MONITORING  
IN MALAYSIA**



**NORISAN MOHD ASPAR  
DEPARTMENT OF STATISTICS, MALAYSIA**



# INTRODUCTION TO MALAYSIA'S SDG

## GOVERNMENT COMMITMENT



YAB PM was at the UN Sustainable Development Summit New York, 25 September 2015

Adoption of "Transforming our World: The 2030 Agenda for Sustainable Development" ...

25 September 2015

## DOSM'S ROLE IN SDG



AT NATIONAL LEVEL  
Focal Point in Coordination of SDG indicators development



AT INTERNATIONAL LEVEL  
Focal Point in ASEAN SDG's indicators development (WGSDGI)



Team Members of High Level Group of SDG and Inter-agency Expert Group SDG (IAEG) at Southern Eastern Region



2016 - 2030



Task Force SDG DOSM

## NATIONAL SDG COUNCIL



Establishing a multi-stakeholder and participatory governance structure spearheaded by the National SDG Council, chaired by Prime Minister



Formulated a National SDG Roadmap to guide the implementation of Agenda 2030 and SDGs

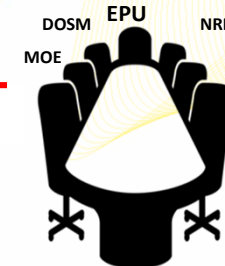
- Phase I (2016-2020) – prioritising SDG according to 11MP
- Phase II (2020-2025) – focus on post 2020 goals and targets
- Phase III (2025 – 2030) – remaining goals and targets in line with Malaysia's capacity and global role

12 October 2016

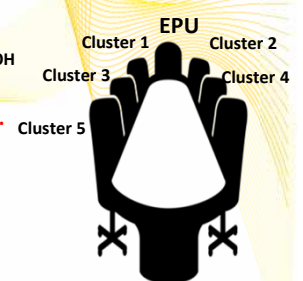
21 December 2016

## SDG GOVERNANCE

Steering Committee



Technical Committee



5 Working Committee :

- i) Cluster Inclusivity
- ii) Cluster Well-Being
- iii) Cluster Human Capital
- iv) Cluster Environment & Natural Resources
- v) Cluster Economic Growth

# NATIONAL SDG ROADMAP AND DIRECTION FOR THE 2030 AGENDA

## Formulating & Roadmap for Implementation of SDG:

- **Phase I (2016-2020)**  
Prioritizing SDG according to 11<sup>th</sup> Malaysia Plan
- **Phase II (2020-2025)**  
Focus on post 2020 Goals and Targets
- **Phase III (2025-2030)**  
Remaining Goals and Targets in line with Malaysia's capacity and global role

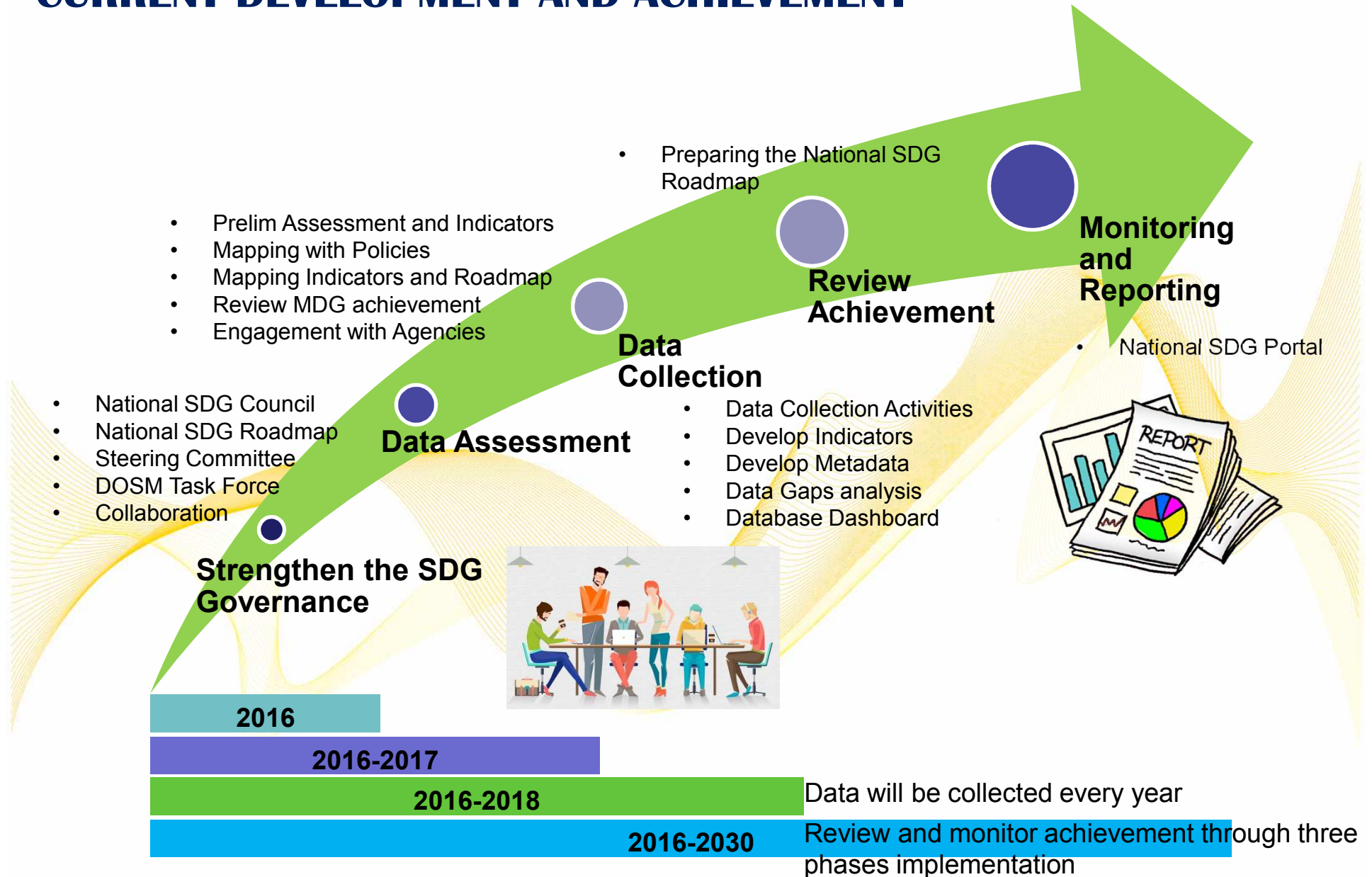
Formulating national indicators and establishing database

Align competencies and organisations with SDG and capacity building

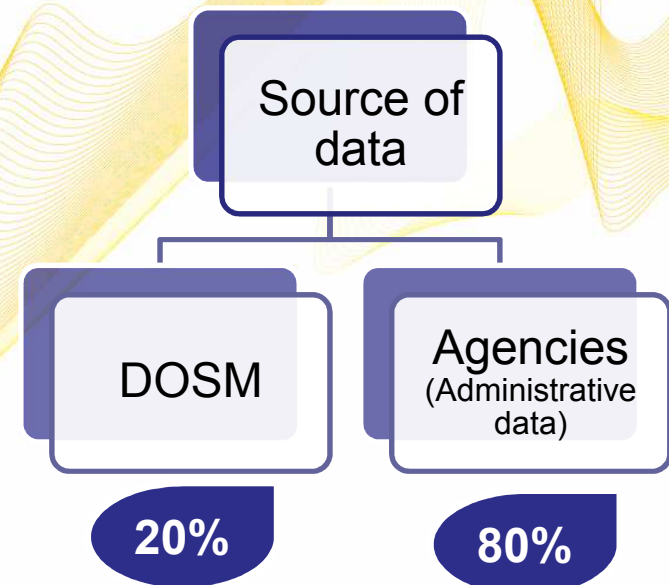
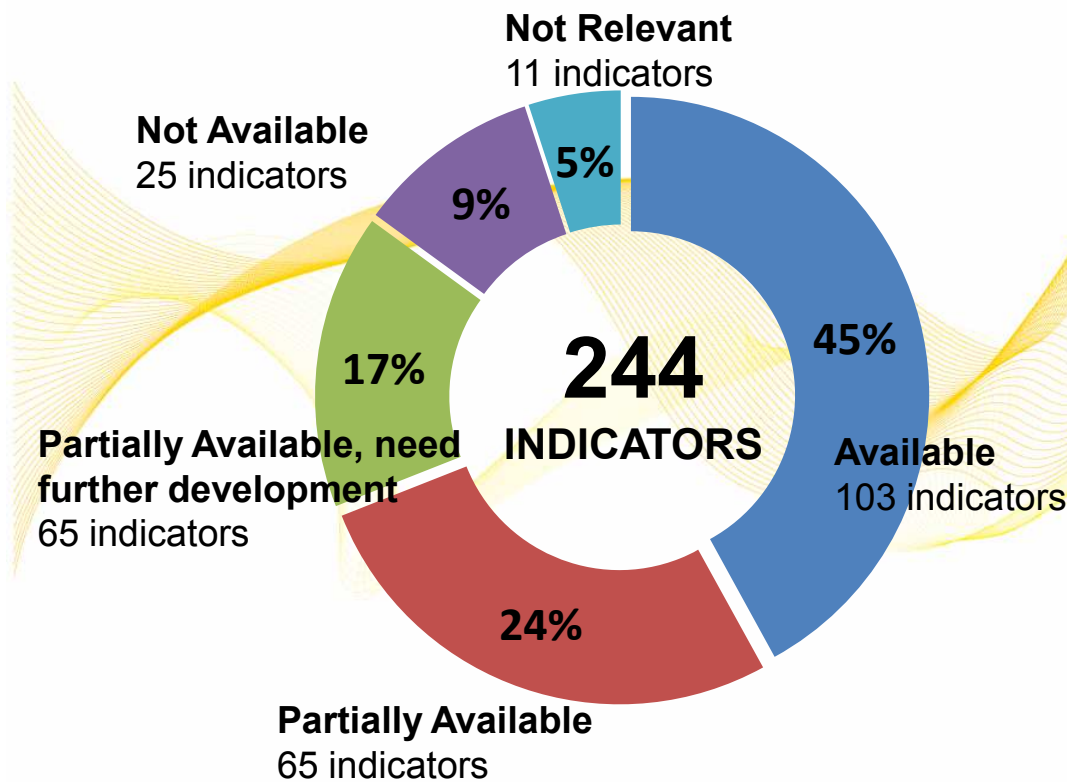
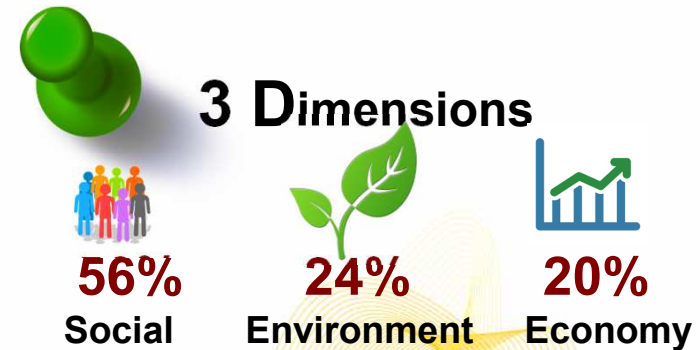
Framework for strategic communication – advocacy, seminars, roundtables and a national portal

Funding through the 5-year Malaysia Plans, private sector, civil society and international agencies

# CURRENT DEVELOPMENT AND ACHIEVEMENT



# DATA ASSESSMENT ACTIVITY: THE AVAILABILITY OF DATA AND SOURCE OF DATA



# SOURCE OF DATA: HOUSEHOLD SURVEY

## GOAL 1: NO POVERTY

Indicators	Availability of data	Frequency of data	Source of data
Proportion of population below the international poverty line, by sex, age, employment status and geographical location (urban/rural)	Available	Twice every five years	Household Income Survey, DOSM
Proportion of population living below the national poverty line, by sex and age	Available	Twice every five years	Household Income Survey, DOSM
Composition of household and consumption expenditure by household income group	Available	Twice every five years	<ul style="list-style-type: none"> <li>Household Income Survey, DOSM</li> <li>Household Expenditure Survey, DOSM</li> </ul>
Proportion of men, women and children of all ages living in poverty in all its dimensions according to national definitions	Available	Twice every five years	Household Income Survey, DOSM
Percentage of poor households by items owned and strata	Available	Twice every five years	<ul style="list-style-type: none"> <li>Household Income Survey, DOSM</li> <li>Household Expenditure Survey, DOSM</li> <li>Basic Amenities Survey, DOSM</li> </ul>

■ Global SDG Indicator

■ Additional indicator to be used as National measurement

# SOURCE OF DATA: HOUSEHOLD SURVEY

GOAL 1: NO POVERTY			
Indicators	Availability of data	Frequency of data	Source of data
The poor and the vulnerable	Available	Twice every five years	<ul style="list-style-type: none"> <li>Household Income Survey, DOSM</li> <li>Household Expenditure Survey, DOSM</li> </ul>
Proportion of population living in households with access to basic services	Partially Available	Twice every five years	<ul style="list-style-type: none"> <li>Household Income Survey, DOSM</li> <li>Household Expenditure Survey, DOSM</li> </ul>
Percentage of houses served with clean water supply in rural area by state	Partially Available	Twice every five years	Basic Amenities Survey, DOSM
Percentage of houses covered with sanitary latrines in rural area by state	Partially Available	Twice every five years	Basic Amenities Survey, DOSM

■ Global SDG Indicator

■ Additional indicator to be used as National measurement

## SOURCE OF DATA: HOUSEHOLD SURVEY

GOAL 2: ZERO HUNGER			
Indicators	Availability of data	Frequency of data	Source of data
Prevalence of undernourishment	Available	Twice every five years	<ul style="list-style-type: none"> <li>Household Income Survey, DOSM</li> <li>Household Expenditure Survey, DOSM</li> </ul>
Prevalence of moderate or severe food insecurity in the population, based on the Food Insecurity Experience Scale (FIES)	Available	Every 4 years	Malaysian Adult Nutrition Survey, Ministry of Health, Malaysia
Prevalence of food quantity insufficient due to financial constraint in the past 12 months	Available	Every 4 years	Malaysian Adult Nutrition Survey, Ministry of Health, Malaysia
Prevalence of food variety insufficiency due to financial constraint in the past 12 months	Available	Every 4 years	Malaysian Adult Nutrition Survey, Ministry of Health, Malaysia
Prevalence of meal size reduction due to financial constraint in the past 12 months	Available	Every 4 years	Malaysian Adult Nutrition Survey, Ministry of Health, Malaysia

■ Global SDG Indicator

■ Additional indicator to be used as National measurement



## SOURCE OF DATA: HOUSEHOLD SURVEY

### GOAL 2: ZERO HUNGER

Indicators	Availability of data	Frequency of data	Source of data
Prevalence of main meal skip due to financial constraint in the past 12 months	Available	Every 4 years	Malaysian Adult Nutrition Survey, Ministry of Health, Malaysia
Prevalence of children feeding with cheap and affordable food	Available	Every 4 years	Malaysian Adult Nutrition Survey, Ministry of Health, Malaysia
Prevalence of children feeding with less food variety due to financial constraint	Available	Every 4 years	Malaysian Adult Nutrition Survey, Ministry of Health, Malaysia
Prevalence of stunting (height for age <-2 standard deviation from the median of the World Health Organization (WHO) Child Growth Standards) among children under 5 years of age	Available	Every 4 years	National Health Morbidity Survey, Ministry of Health, Malaysia
Prevalence of malnutrition (height for age >-2 or <-2 standard deviation from the median of the WHO Child Growth Standards) among children under 5 years of age, by type (wasting and overweight)	Available	Every 4 years	National Health Morbidity Survey, Ministry of Health, Malaysia

■ Global SDG Indicator

■ Additional indicator to be used as National measurement

## SOURCE OF DATA: HOUSEHOLD SURVEY

### GOAL 3: GOOD HEALTH AND WELL-BEING

Indicators	Availability of data	Frequency of data	Source of data
Proportion of women of reproductive age (aged 15-49 years) who have their need for family planning satisfied with modern methods	Available	Every 5 years	Malaysia Population and Family Survey, National Population & Family Development Board

## SOURCE OF DATA: HOUSEHOLD SURVEY

### GOAL 4: QUALITY EDUCATION

Indicators	Availability of data	Frequency of data	Source of data
Proportion of youth and adults with information and communications technology (ICT) skills, by type of skill	Available	Every 2 years	ICT Use and Access by Individuals and Households Survey, DOSM
Proportion of population in a given age group achieving at least a fixed level of proficiency in functional (a) literacy and (b) numeracy skills, by sex	Available	Annually	Proxy from Labour Force Survey, DOSM
Literacy rate (aged 15-24 years) by state and sex	Available	Annually	Proxy from Labour Force Survey, DOSM
Youth / adult literacy rate	Available	Annually	Proxy from Labour Force Survey, DOSM

■ Global SDG Indicator

■ Additional indicator to be used as National measurement

## SOURCE OF DATA: HOUSEHOLD SURVEY

### GOAL 5: GENDER EQUALITY

Indicators	Availability of data	Frequency of data	Source of data
Proportion of women aged 15-49 years who make their own informed decisions regarding sexual relations, contraceptive use and reproductive health care	Available	Every 5 years	Population and Family Survey, National Population & Family Development Board
Proportions of individuals who own a mobile telephone, by sex	Available	Every 2 years	ICT Use and Access by Individuals and Household Survey, DOSM

## SOURCE OF DATA: HOUSEHOLD SURVEY

### GOAL 6: CELAN WATER AND SANITATION

Indicators	Availability of data	Frequency of data	Source of data
Proportion of population using safely managed drinking water services	Available	Twice in 5 years	<ul style="list-style-type: none"> <li>• Household Income Survey, DOSM</li> <li>• Household Expenditure Survey, DOSM</li> <li>• Basic Amenities Survey, DOSM</li> </ul>
Proportion of population using safely managed sanitation services, including a hand-washing facility with soap and water	Available	Twice in 5 years	<ul style="list-style-type: none"> <li>• Household Income Survey, DOSM</li> <li>• Household Expenditure Survey, DOSM</li> <li>• Basic Amenities Survey, DOSM</li> </ul>

## SOURCE OF DATA: HOUSEHOLD SURVEY

### GOAL 7: AFFORDABLE AND CLEAN ENERGY

Indicators	Availability of data	Frequency of data	Source of data
Proportion of population with access to electricity	Available	Twice in 5 years	<ul style="list-style-type: none"><li>• Household Income Survey, DOSM</li><li>• Household Expenditure Survey, DOSM</li><li>• Basic Amenities Survey, DOSM</li></ul>

## SOURCE OF DATA: HOUSEHOLD SURVEY

### GOAL 8: DECENT WORK AND ECONOMIC GROWTH

Indicators	Availability of data	Frequency of data	Source of data
Proportion of informal employment in non-agriculture employment, by sex	Available	Every 2 years	Informal Sector Workforce Survey, DOSM
Average hourly earnings of female and male employees, by occupation, age and person with disabilities	Partially Available	Annually	Salaries and Wages Survey, DOSM
Salaries and wages by type of employment	Available	Annually	Salaries and Wages Survey, DOSM
Labour Force Participation Rate	Available	Annually	Labour Force Survey, DOSM
Unemployment rate, by sex, age and person with disabilities	Partially Available	Annually	Labour Force Survey, DOSM
Proportion of youth (aged 15-24 years) not in education, employment or training	Available	Annually	Labour Force Survey, DOSM

■ Global SDG Indicator

■ Additional indicator to be used as National measurement

## SOURCE OF DATA: HOUSEHOLD SURVEY

### GOAL 9: INDUSTRY, INNOVATION AND INFRASTRUCTURE

Indicators	Availability of data	Frequency of data	Source of data
Manufacturing employment as a proportion of total employment	Available	Annually	Labour Force Survey, DOSM
Proportion of population covered by a mobile network, by technology	Partially Available, Need Further Development	Every 2 years	ICT Use and Access by Individuals and Households, DOSM



## SOURCE OF DATA: HOUSEHOLD SURVEY

### GOAL 10: REDUCED INEQUALITIES

Indicators	Availability of data	Frequency of data	Source of data
Growth rate of household expenditure or income per capita among the bottom 40 per cent of the population and the total population	Available	Twice in 5 years	<ul style="list-style-type: none"> <li>Household Income Survey, DOSM</li> <li>Household Expenditure Survey, DOSM</li> </ul>
Proportion of people living below 50 per cent of median income, by sex, age and persons with disabilities	Partially Available	Twice in 5 years	<ul style="list-style-type: none"> <li>Household Income Survey, DOSM</li> <li>Household Expenditure Survey, DOSM</li> </ul>

## SOURCE OF DATA: HOUSEHOLD SURVEY

### GOAL 16: PEACE, JUSTICE AND STRONG INSTITUTIONS

Indicators	Availability of data	Frequency of data	Source of data
Proportions of young women and men aged 18-29 years who experienced sexual violence by age 18	Partially Available	Every 5 years	Population & Family Survey, National Population & Family Development Board

### GOAL 17: PARTNERSHIP FOR THE GOALS

Indicators	Availability of data	Frequency of data	Source of data
Proportion of individuals using the Internet	Available	Every 2 years	ICT Use and Access by Individuals and Households Survey, DOSM

# USING HOUSEHOLD SURVEY DATA FOR SDG MONITORING IN MALAYSIA

## OPPORTUNITIES

### Availability status

- Many of the indicators were available using survey data

### Disaggregation level

- Survey data can provide detail disaggregation level up to state and strata-urban and rural as well as Administrative District level

### Demographic information

- Survey data can provide detail demographic information such as sex, age, citizenship, ethnicity and working status

# USING HOUSEHOLD SURVEY DATA FOR SDG MONITORING IN MALAYSIA

## ISSUES AND CHALLENGES

### Availability status

- Some indicators have the availability status of Partially available and Partially available, need further development
- The choice is to add new variable/ question in the questionnaire form

### Metadata

- Currently refer to SDG indicators Metadata from UNSD but maybe some indicators have to adapted/ adjusted according to the country
- Including the definition, concepts and terms of indicators

### Frequency of the Survey

- Frequency of survey is too long
- For example, every 5 years
- What is the best time series data to monitor the SDG indicators

# USING HOUSEHOLD SURVEY DATA FOR SDG MONITORING IN MALAYSIA

## ISSUES AND CHALLENGES

### Relative Standard Error

- Some indicators have high Relative Standard Error (RSE) >30%.
- Is it acceptable?

### Proxy data

- Only proxy indicators available through household survey for literacy and numeracy skill
- The exact definition of literacy and numeracy are not measured using the sources



# Welcoming 62<sup>nd</sup> ISI WORLD STATISTICS CONGRESS 2019



18 - 23 OGOS 2019 | KUALA LUMPUR

# Thank You



DEPARTMENT OF STATISTICS, MALAYSIA