

# **Environmental-Economic Accounting in Brazil**

**Rebeca Palis**  
**Head of National Accounts Department**

# Brazilian Institute of **Geography** and **Statistics**

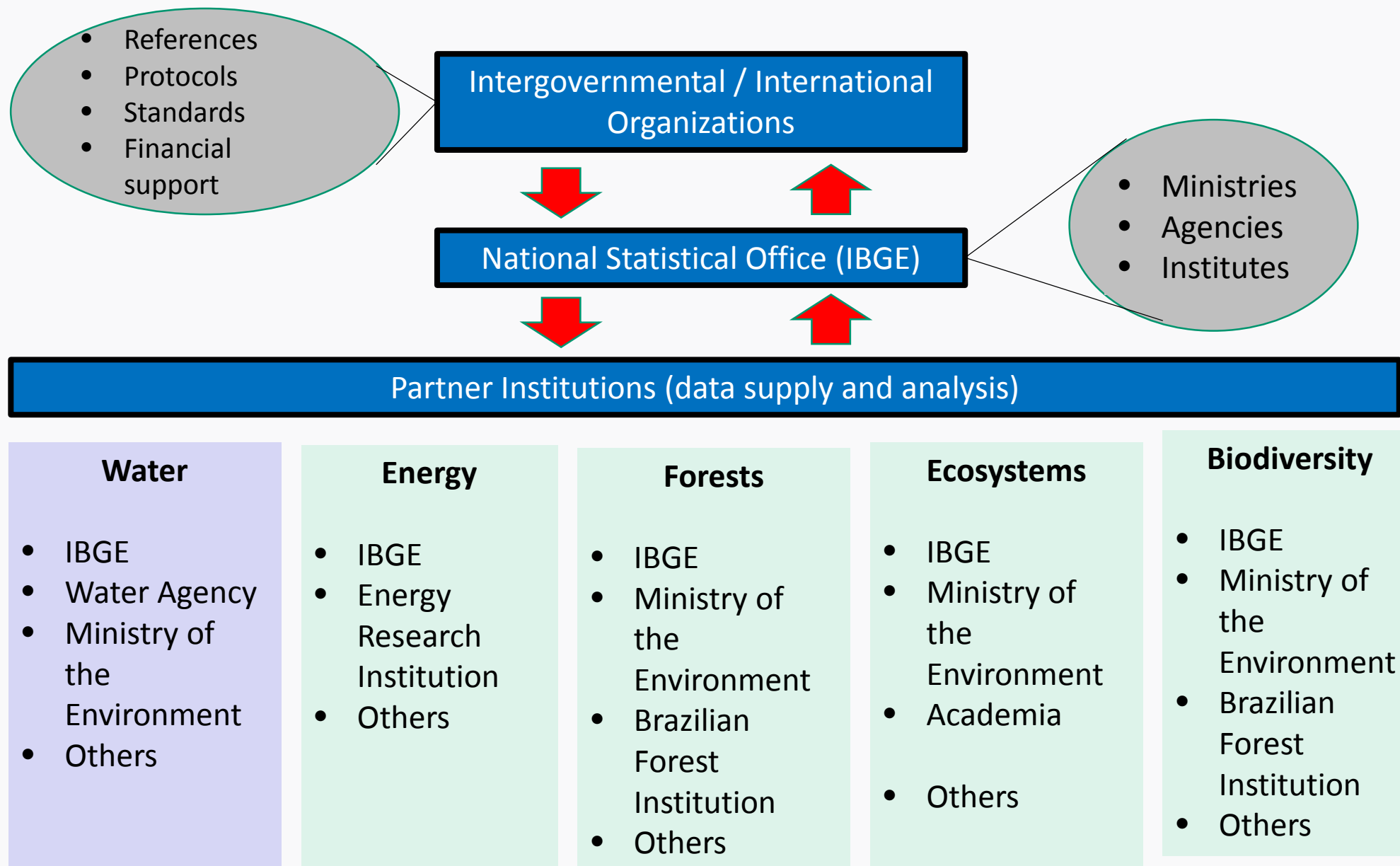
## Mission

To portray Brazil by providing the information required to the understanding of its reality and the exercise of citizenship

**Geography**

**Statistics**

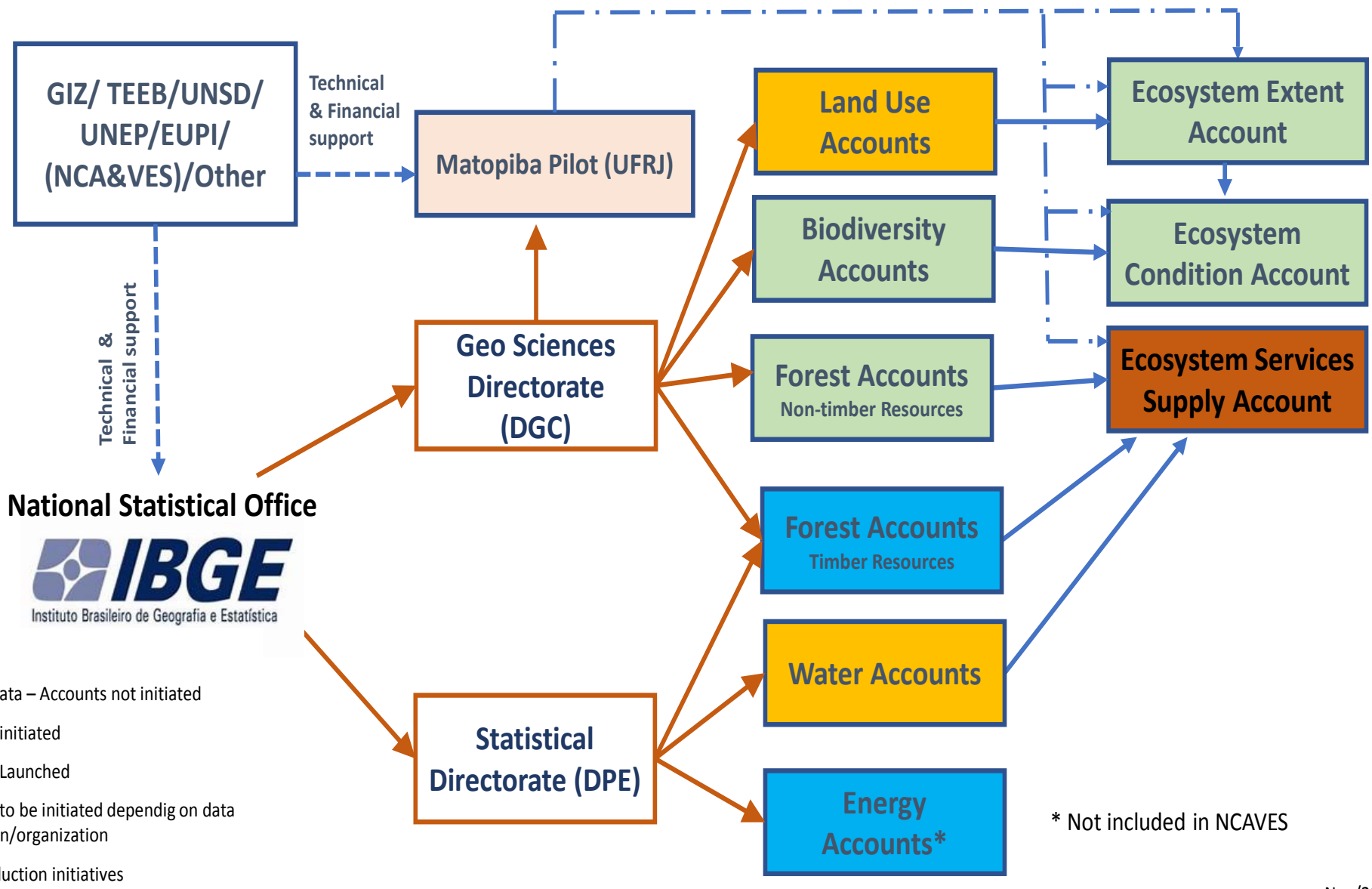
# Institutional Arrangements for Environmental-Economic Accounting in Brazil



## Challenges

- Integration of economic and physical aspects related to a specific issue requires an extensive database acquired from different institutions that most of the time do not have the same perspective in terms of statistics;
- Data exchanging is not an easy task within the governmental administration
- Data analysis must be carefully conducted to avoid erroneous conclusions
- The choice of indicators must be very well discussed regarding not only technical issues but also political use

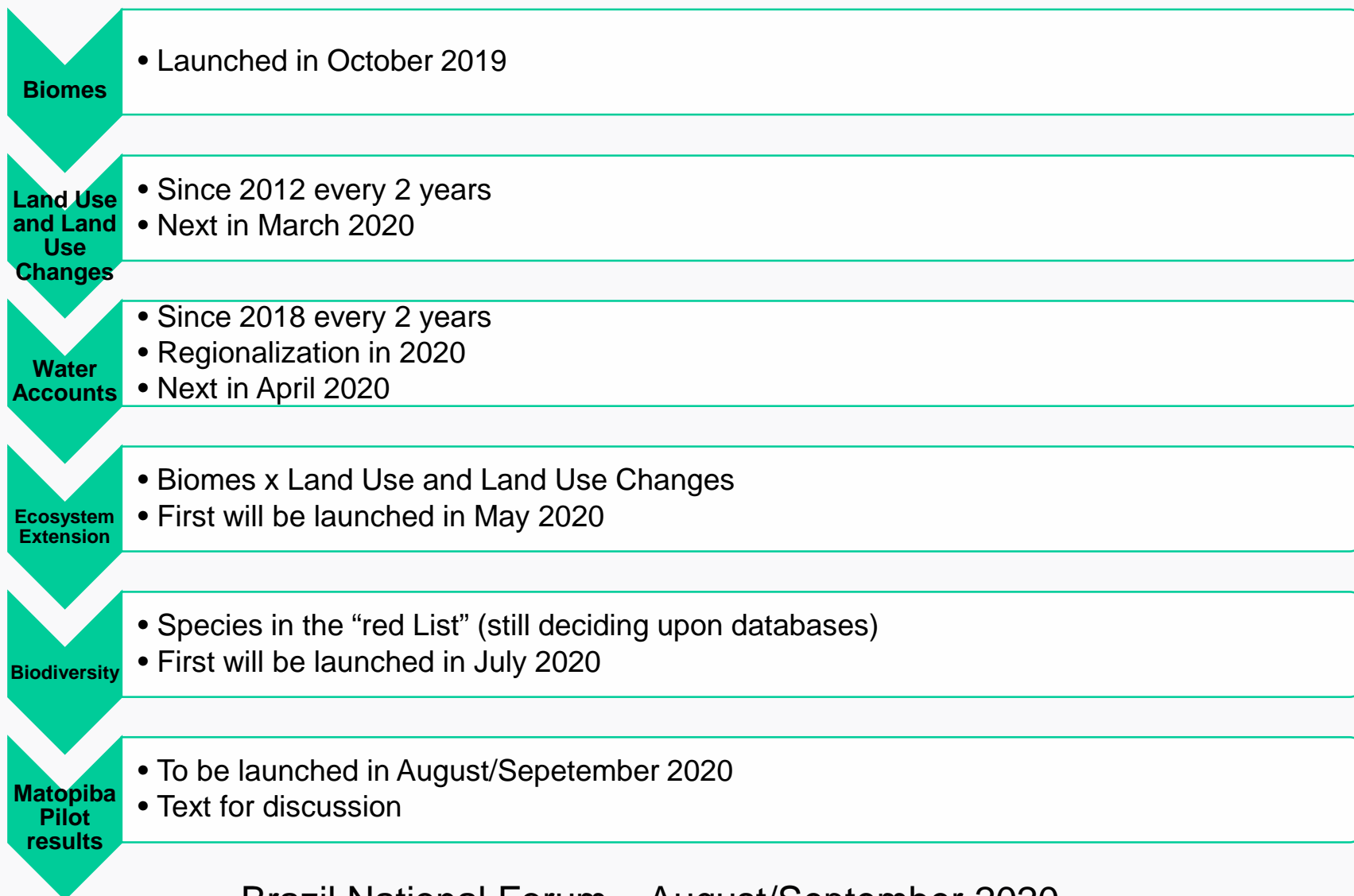
# Program of Environmental-Economic Accounts Brazil



\* Not included in NCAVES

Nov/2019

# Launch Timetable 2019/2020

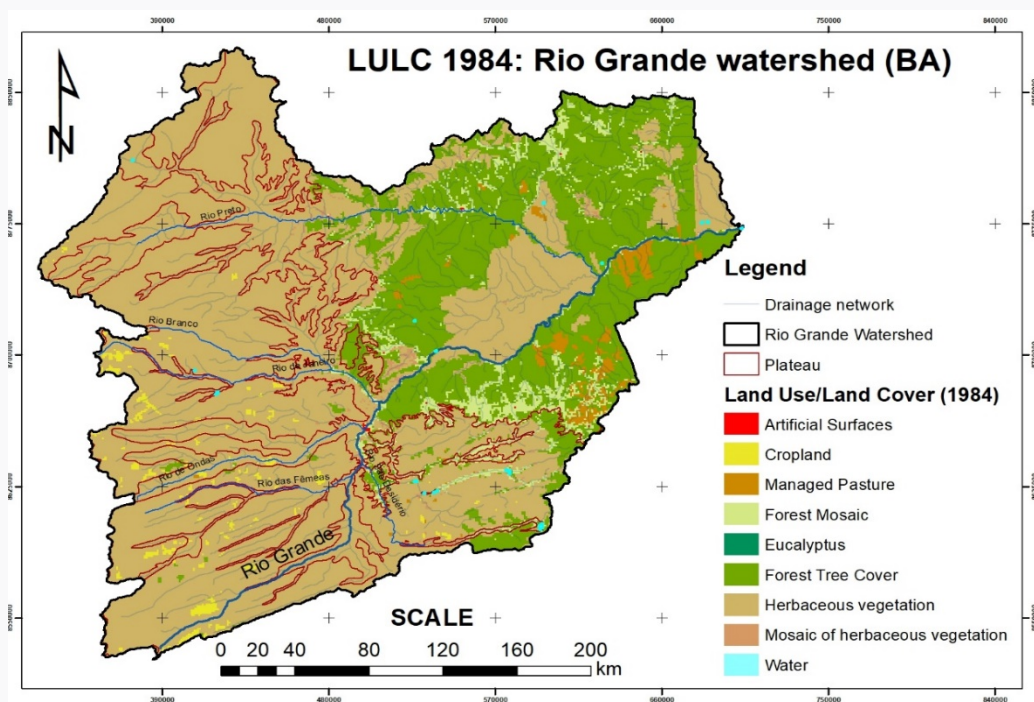


Brazil National Forum – August/September 2020

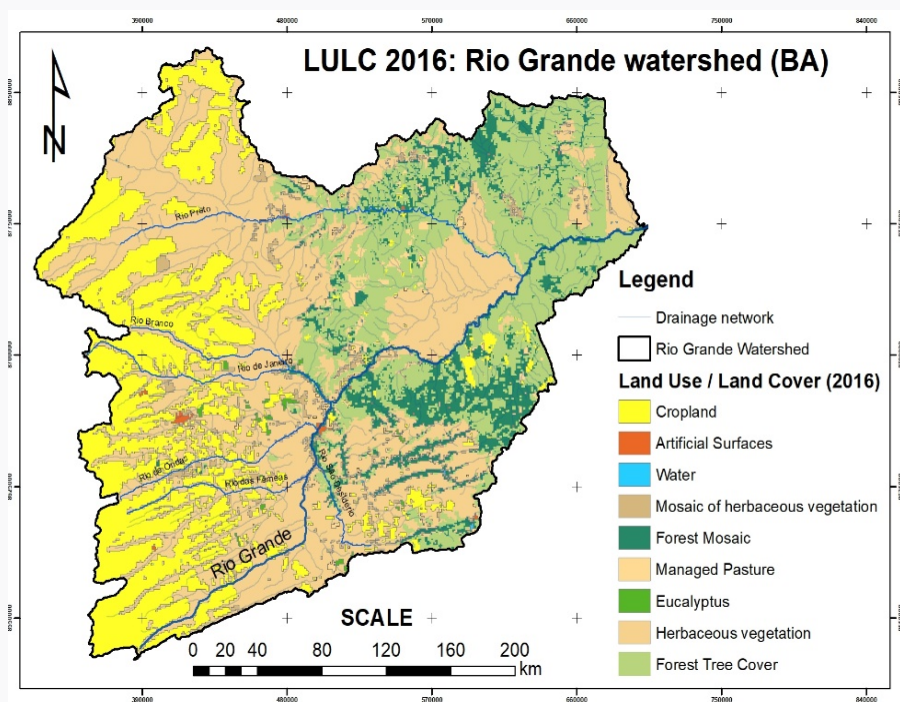
# Land Use and Land Use Change

## Rapid advance of agriculture in the last 30 years

1984

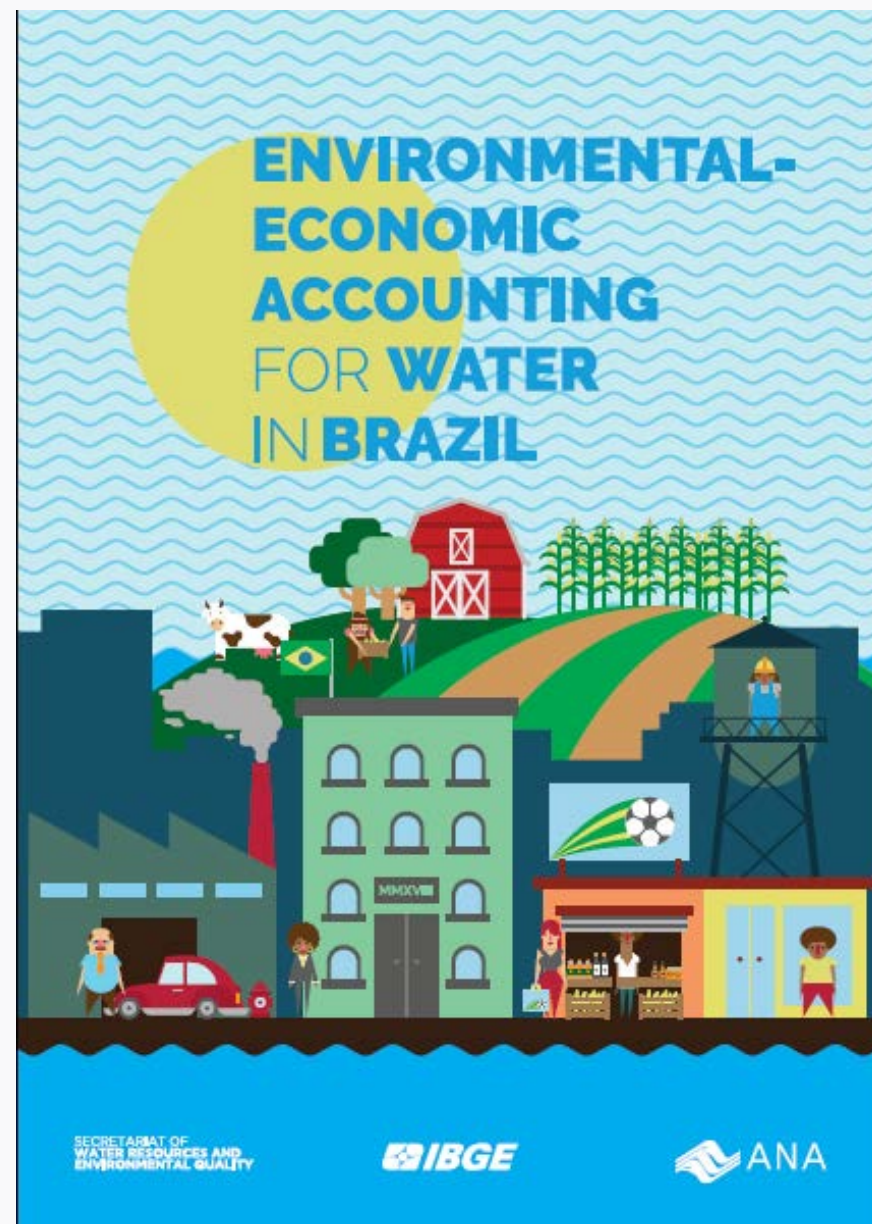


2016



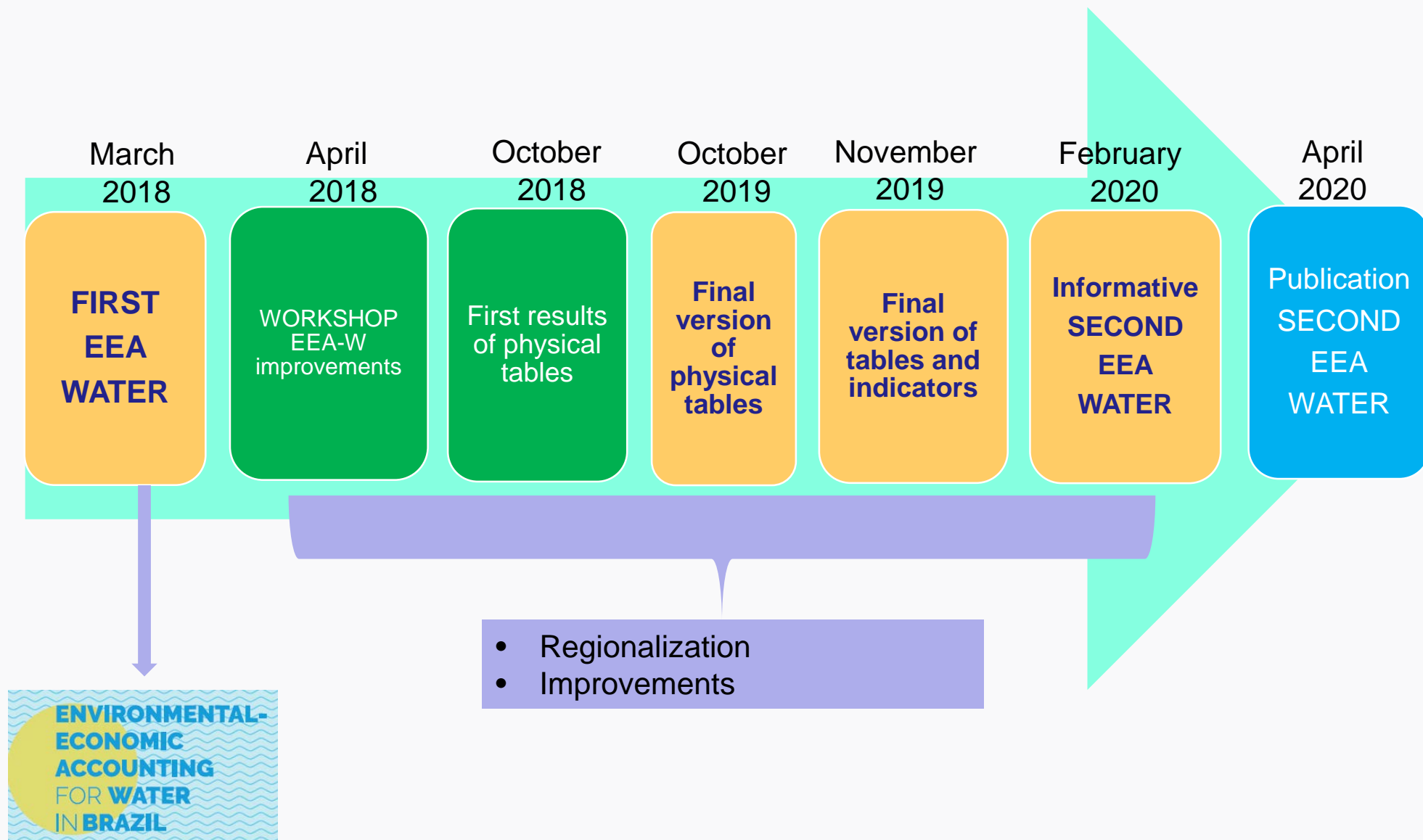


# Water Accounts





# Timeline SEEA-W for Brazil

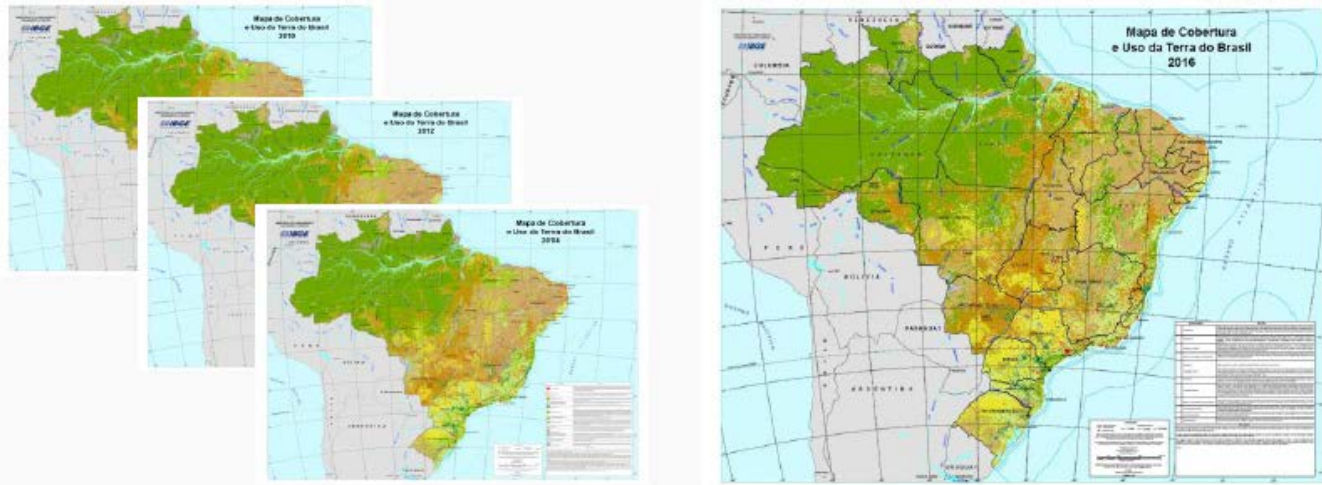


# Biodiversity Accounts - challenges and approaches

- Direct observation of biodiversity indicators is unworkable over large spatial scales
- Available data is spatially and temporally heterogeneous
- Until a nation-wide monitoring program is operational with sufficient spatial coverage and periodicity, inferences about the status and trends of biodiversity for accounting purposes can only be achieved via habitat-based approaches
- Some examples – GLOBIO, SDMs for selected species, BILBI
- Threatened species accounts may be compiled based on the periodic assessments

# SEEA-F Brazilian Approach

## 1) Forest stocks through Land Use and Land Use Change

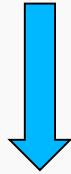


## 2) Timber Products

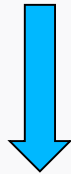


# Brazilian Approach for Ecosystem Extension Accounts

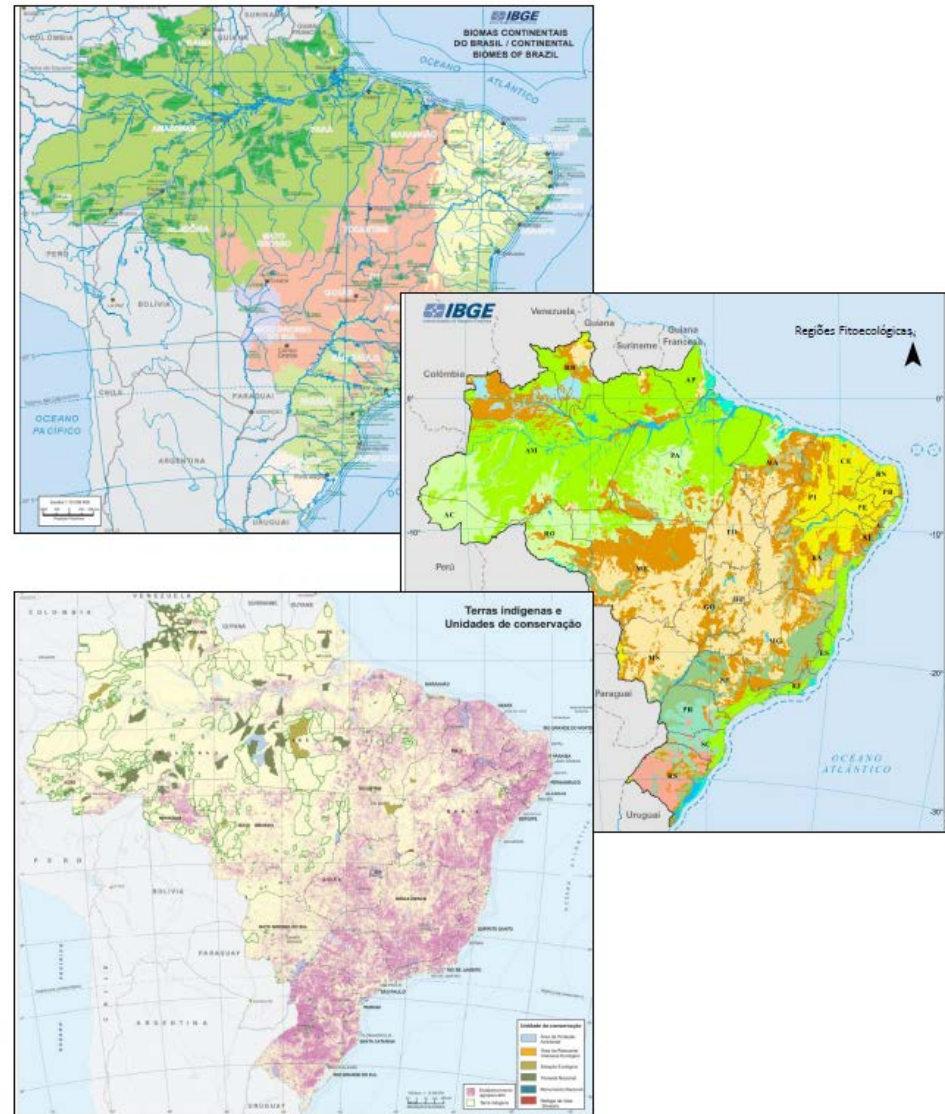
Ecosystem Asset



Ecological Unity



**1st - Biomes**  
Natural Unities  
Other



# Thank you!

**Rebeca de La Rocque Palis**

rebeca.palis@ibge.gov.br

Head of National Accounts Department

G

**[www.ibge.gov.br](http://www.ibge.gov.br)**